



Girlguiding
North West England

www.girlguidingnwe.org.uk

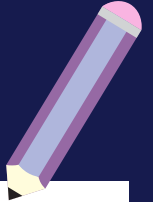
Guiding Road
Preston
PR2 5PD

Visit our shop!
Open 9am – 4pm
Monday to Friday

01772 791947
northwesthq@girlguidingnwe.org.uk

GETTING READY
FOR MY
NEXT ADVENTURE

Moving up!



Name:

Age:




Rainbows


Brownies


Guides


Rangers



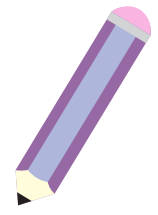
Girlguiding
North West England

This journal is to help you as you start your journey to the next section within Girlguiding.

If you are a Rainbow, you'll be heading to Brownies. If you are a Brownie, Guides awaits and for Guides, joining Rangers is your next step.

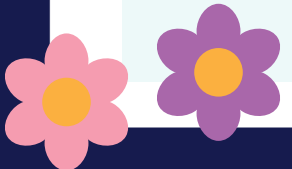
Sometimes it can feel a little scary to leave behind the unit that we have come to love and the leaders that know us so well. But your next adventure is just around the corner and working through this journal will help you to feel happy and confident about moving up!

Where am I going?
Which unit am I due to go to next?



How do I feel about leaving my unit?

Light blue rectangular box for writing.



What am I most looking forward to?

Light blue rectangular box for writing.



Is anything worrying me?

Light blue rectangular box for writing.



Who can I talk to about it?

Light blue rectangular box for writing.



What do I think it will be like when I start?

Light blue rectangular box for writing.

